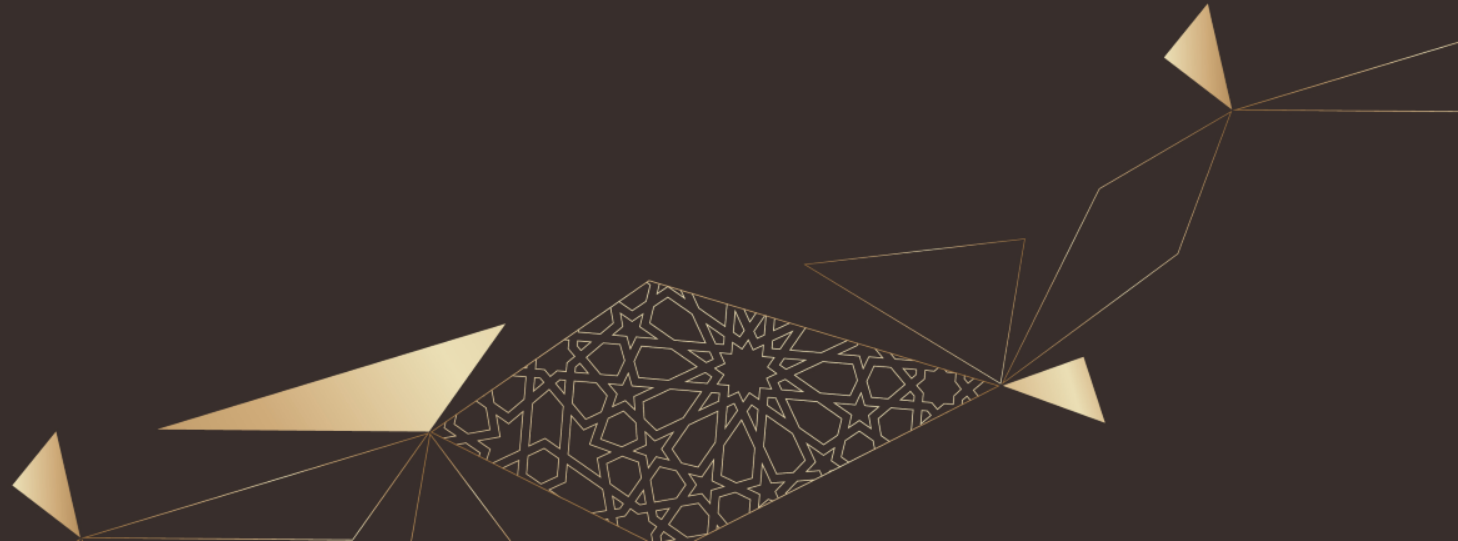




EZDAN PALACE  
HOTEL

# Ezdan Palace Hotel

Creating memories









The brand new 5-star Ezdan Palace Hotel, a unique landmark in Doha offering the ultimate in luxury experience.

- Jewel of Ezdan – first 5 star hotel addition to Ezdan Hotels portfolio.
- 195 lavishly appointed rooms and suites, including one Royal suite and two unique Bridal suites.
- 5 state-of-the-art meeting rooms.
- Fully equipped Business Centre and Executive Lounge.
- Three superb restaurants (Thai, Italian and International).
- Luxurious Spa with 11 treatment rooms.
- Mixed gym and a dedicated gym for ladies.
- Spacious swimming pool and jacuzzi for adults.
- A dedicated pool with play area for kids.
- Ladies' salon.
- On-property gift shops.

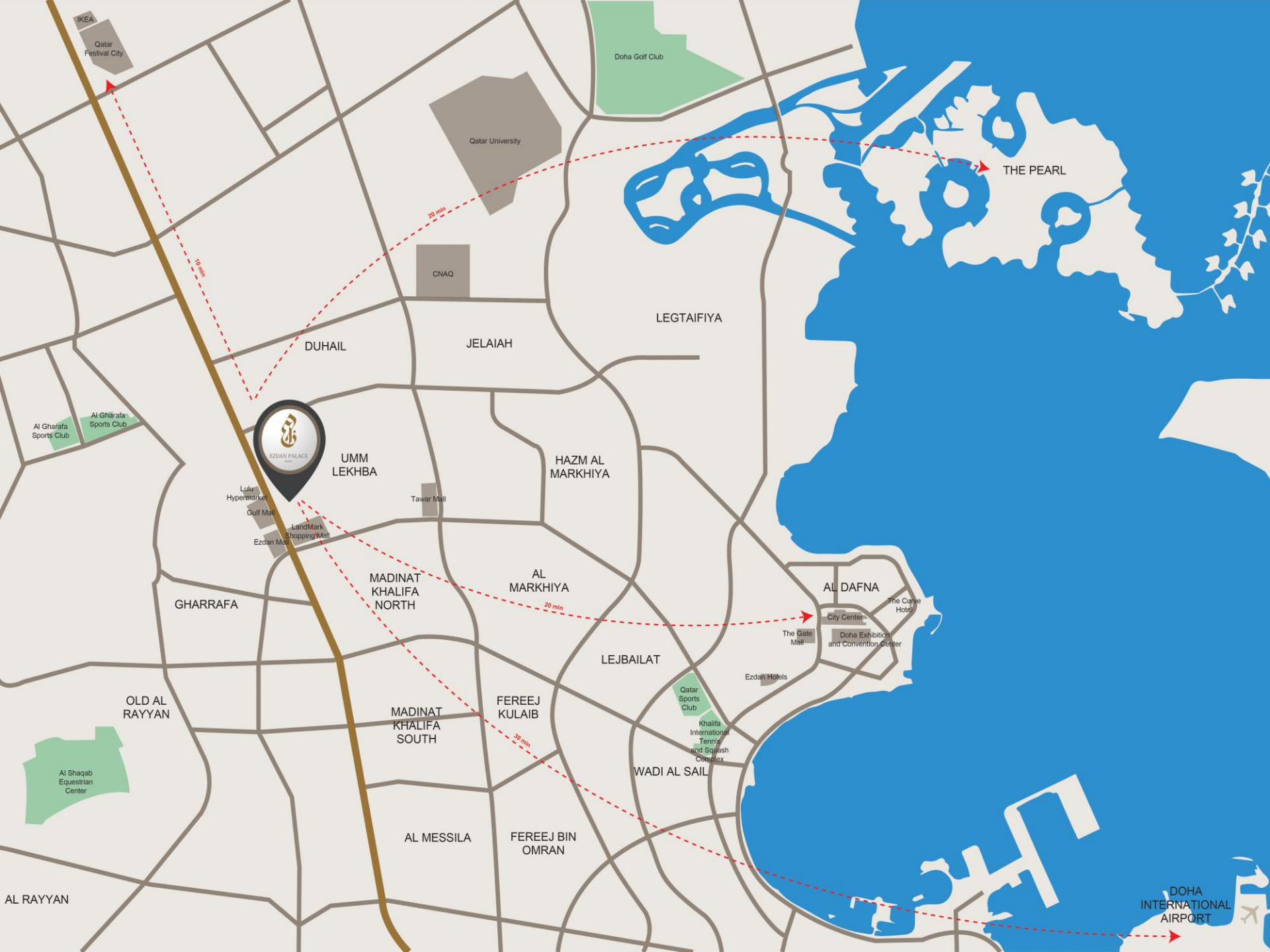


# Location

- Nestled between old and new Doha, Ezdan Palace Hotel provides with easy access to Doha's key business and entertainment districts.
- Situated on Al Shamal Road, 24 km from Hamad International Airport and 9 km from Doha's main business district - West Bay.
- Located just across the street from Ezdan Mall, adjacent to Landmark Mall, and only 10 minutes from Doha Festival City and Al Hazm Malls.







IKEA  
Qatar Festival City

Doha Golf Club

Qatar University

THE PEARL

CNAQ

LEGTAIFIYA

DUHAIL

JELAIAH

Al Gharafa Sports Club

Al Gharafa Sports Club



UMM LEKHBA

HAZM AL MARKHIYA

Lulu Hypermarket

Gulf Mall

LandMark Shopping Mall

Tawar Mall

MADINAT KHALIFA NORTH

AL MARKHIYA

AL DAFNA

City Center

The Curve Hotel

The Gate Mall

Doha Exhibition and Convention Center

Ezzan Hotels

GHARRAFA

LEJBAILAT

Qatar Sports Club

Khairifa International Tennis and Squash Complex

OLD AL RAYYAN

MADINAT KHALIFA SOUTH

FEREEJ KULAIB

WADI AL SAIL

Al Shaab Equestrian Center

AL MESSILA

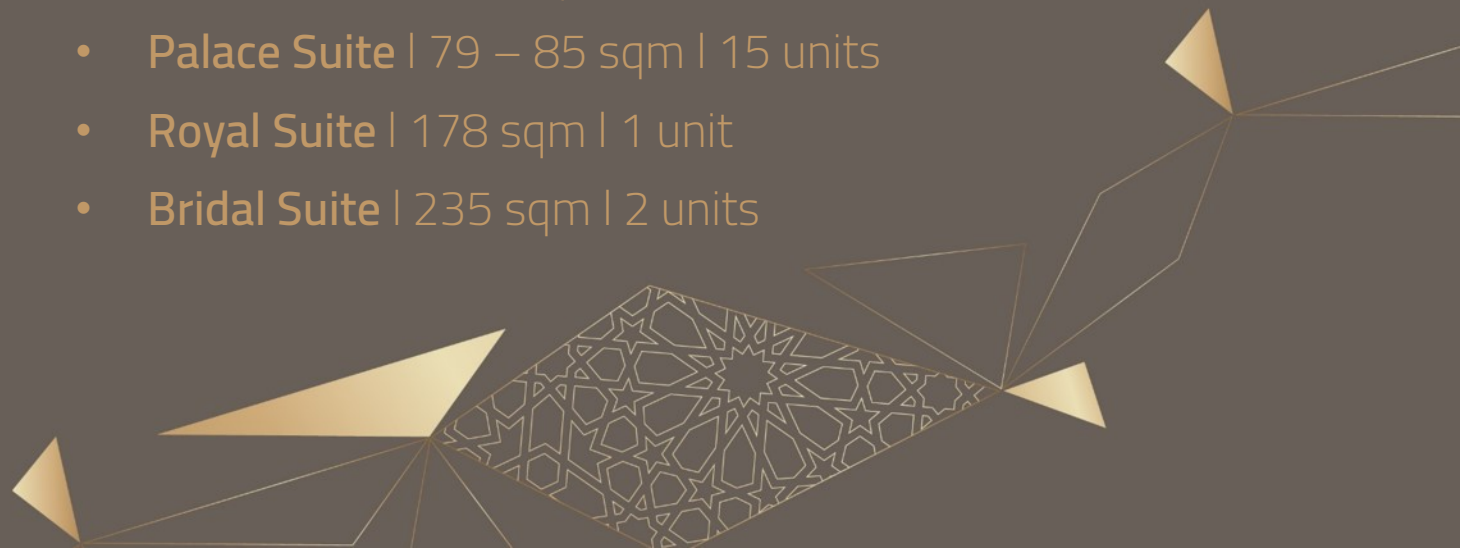
FEREEJ BIN OMRAN

AL RAYYAN

DOHA INTERNATIONAL AIRPORT

# Rooms and Suites

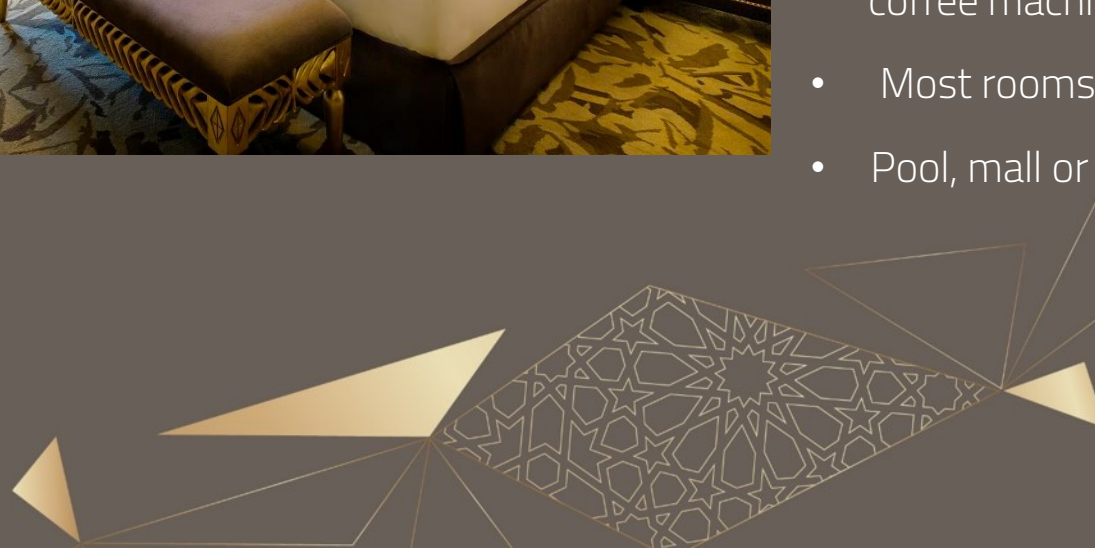
- **Superior Room** | 39 – 43 sqm | 159 units
- **Deluxe Room** | 53 sqm | 3 units
- **Junior Suite** | 62 sqm | 10 units
- **Premier Suite** | 78 sqm | 6 units
- **Palace Suite** | 79 – 85 sqm | 15 units
- **Royal Suite** | 178 sqm | 1 unit
- **Bridal Suite** | 235 sqm | 2 units



## Superior room | 39 – 43 sqm



- Luxuriously appointed room
- Choice of king or twin beds
- En-suite bathroom with a corner bath and separate rain shower
- Comfortable workspace
- 49'' Full HD Smart TV
- Tea and coffee making facilities, featuring Nespresso coffee machine
- Most rooms have balconies
- Pool, mall or city view

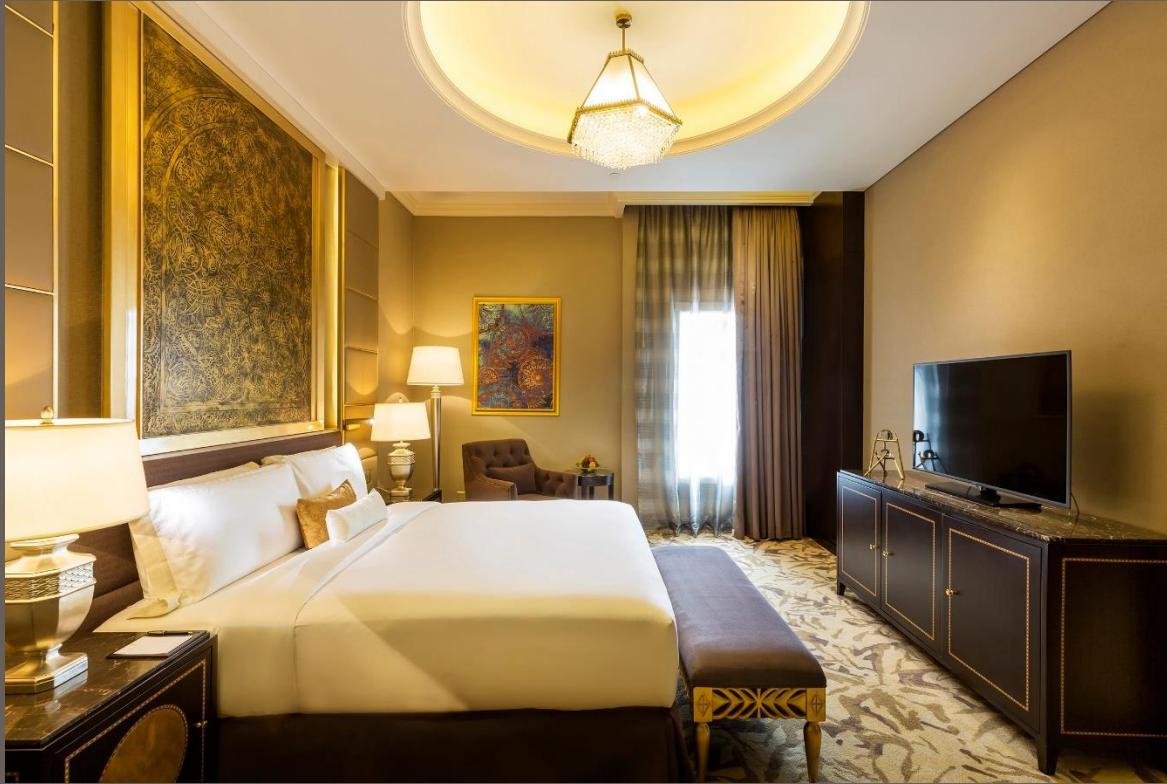








# Palace suite | 79 – 85 sqm



- Signature suite, featuring chic design and generous space
- One king size bedroom
- Separate living room
- 49'' Full HD Smart TV
- Full marble bathroom with a deep soaking bathtub and a separate rain shower
- Guest washroom
- Tea and coffee making facilities, featuring Nespresso coffee machine
- Pool or city view









# Royal suite | 178 sqm



- The hotel's most exclusive residence and the epitome of luxury
- One king size bedroom
- En-suite bathroom with marble and mosaic walls
- Separate living room
- 65'' Full HD Smart TV
- Dedicated meeting room for four persons
- Separate lounge and dining area for up to four guests
- Kitchenette
- VIP amenities

















# Restaurants

- **Tolaitola** | International cuisine
- **Red Orchid** | Thai cuisine
- **Palermo** | Italian cuisine





# Tolaitola | All day dining restaurant



An elegant all day dining restaurant with indoor and alfresco seating options, offering contemporary Arabic and International dishes.

- Breakfast buffet: 6.00 am to 10.30 am
- Lunch buffet: 12.30 pm to 3.00 pm.
- Dinner buffet: 7.00 pm to 12.00 midnight
- A la carte: 11.00 am to 11.30 pm
- Open kitchen
- Indoor and alfresco dining options
- Capacity: 172 pax (terrace – 26; indoor – 146).



# Palermo | Italian signature restaurant



- Lunch: 12.30 pm to 3.00 pm
- Dinner: 7.00 pm to 12.00 midnight
- Indoor and alfresco dining options
- Open kitchen
- Two private dining rooms (with capacity of 14 and 12 pax)
- Total capacity: 134 pax (terrace – 28; indoor – 80)

Opulent venue, serving authentic Italian dishes with private dining options.

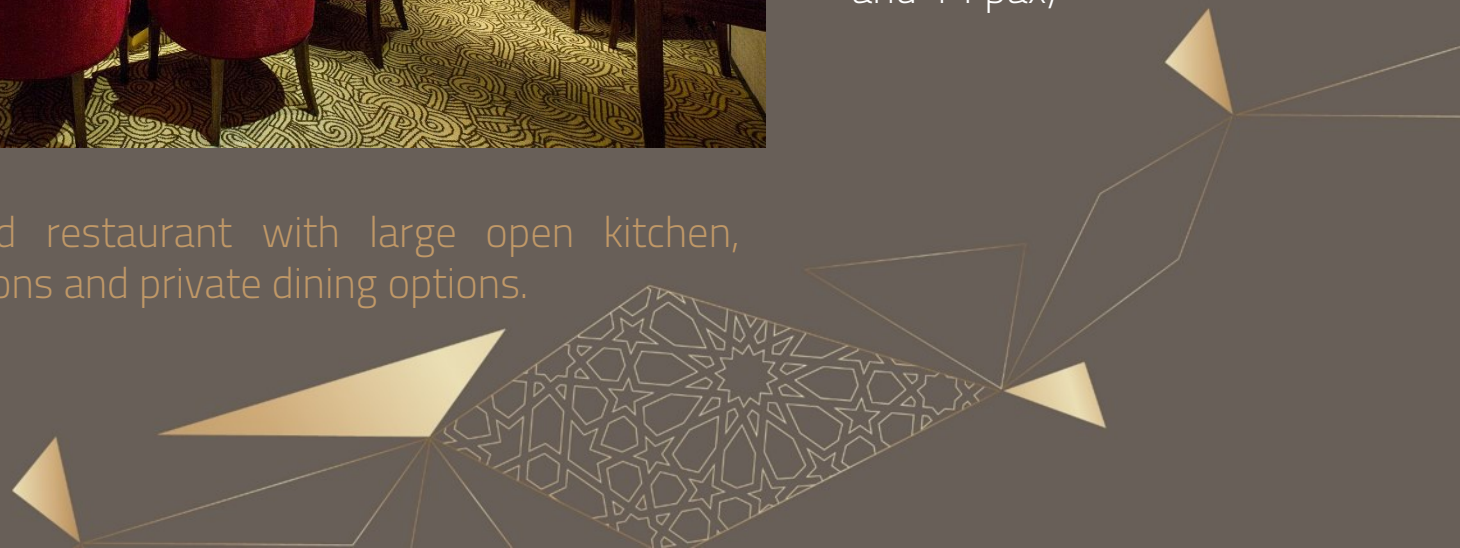


# Red Orchid | Thai signature restaurant



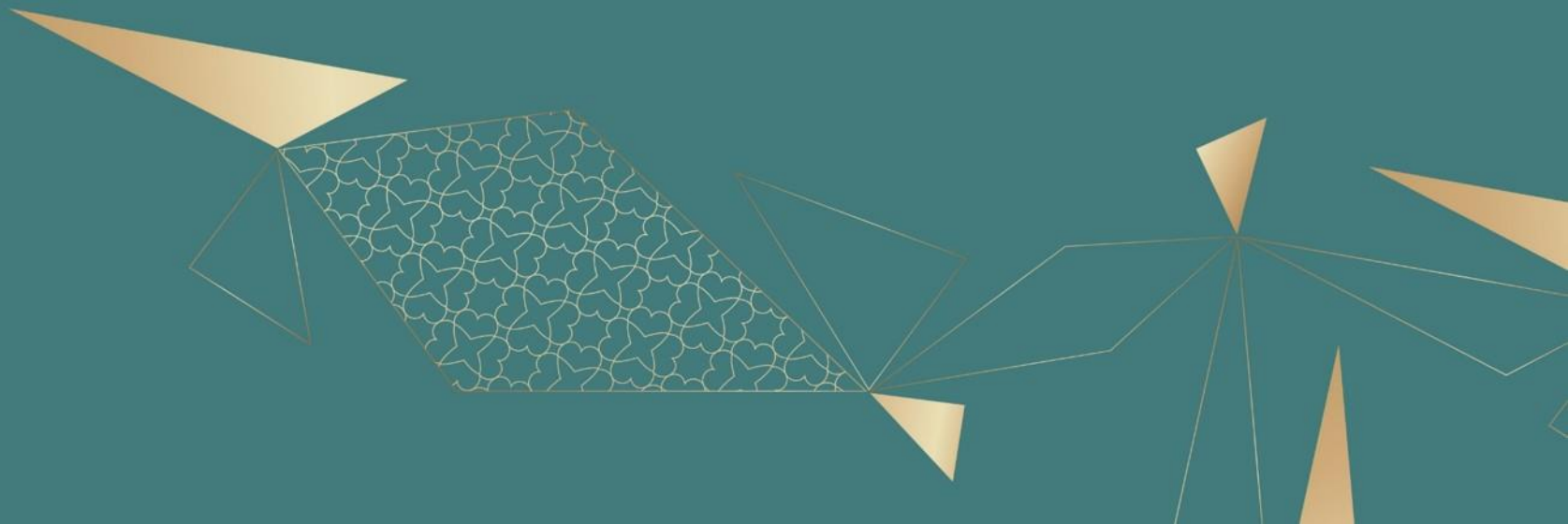
- A la carte dinner: 7.00 pm to 12.00 midnight
- Indoor and alfresco dining options
- Open kitchen
- Two private dining rooms
- Total capacity: 138 pax (terrace – 44; indoor – 68; private dining rooms – 12 and 14 pax)

Exquisitely presented restaurant with large open kitchen, prominent work stations and private dining options.





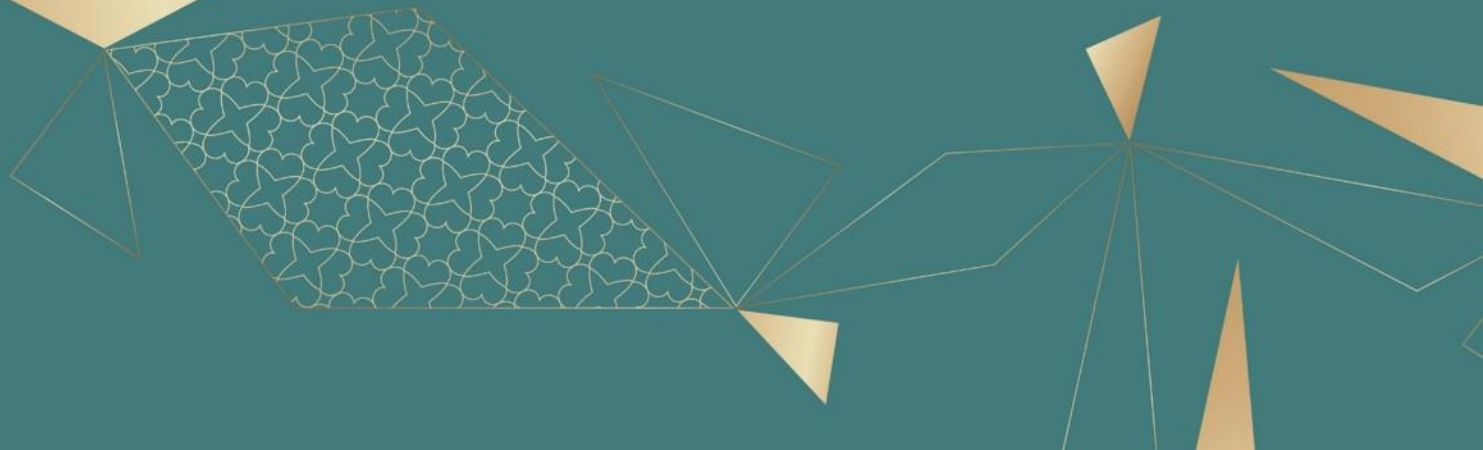
# Spa and wellness





# Leisure and fitness facilities

- Extensive selection of luxurious treatments
- 11 treatment rooms ( five for ladies, five for gents and one room for couples)
- Treatment suite (male and female) with sauna, steam, hammam, Jacuzzi and heated loungers
- Spacious outdoor swimming pool, Jacuzzi and in-pool counter for refreshments
- Dedicated children's pool with jumping fountain and kid's play area
- 24 hour mixed gym and dedicated gym only for ladies
- Private membership options
- Beauty salon for ladies









# Meetings and events





## Meeting rooms | 21 - 70 sqm

- Five meeting spaces ranging from 21-70 sqm
- Natural light
- The state-of-the-art audio-visual equipment
- Complimentary Wi-Fi
- Flexible set-up
- Ideal for small corporate meetings, training, seminars, and private events.
- Capacity up to 42 pax







# Weddings

Memories will be created for bride and groom in one of a kind in town Bridal Suites attached to the Grand ballroom.









## Jawaher | Grand Ballroom | 1905 sqm

- Can accommodate up to 1300 pax for seated dinner and 2000 pax for a cocktail reception.
- Divisible into 3 individual venues.
- Indoor pre-function area allowing for catering, breakout and exhibition space.
- Private entrance with valet parking facilities.
- State-of-the-art lighting and audiovisual equipment.
- Professional AV support and banqueting team.
- Dedicated meeting and events coordinator.
- Two bridal suites attached to the ballroom.

Note: bridal suites feature make up room, podium, garden area, sitting and dining rooms, bedroom, kitchen and much more.







# Outside catering

Our professional banqueting team can cater small, medium and large size events, offering tailor-made solutions for almost every conceivable event at the location of your choice.



Thank you



EZDAN PALACE  
HOTEL

EZDAN PALACE HOTEL · P.O. Box 30503 · Al Shamal Road, Doha, Qatar  
T +974 4007 1111 · F +974 4007 1122 · [info@ezdanpalace.qa](mailto:info@ezdanpalace.qa) · [www.ezdanpalace.qa](http://www.ezdanpalace.qa)